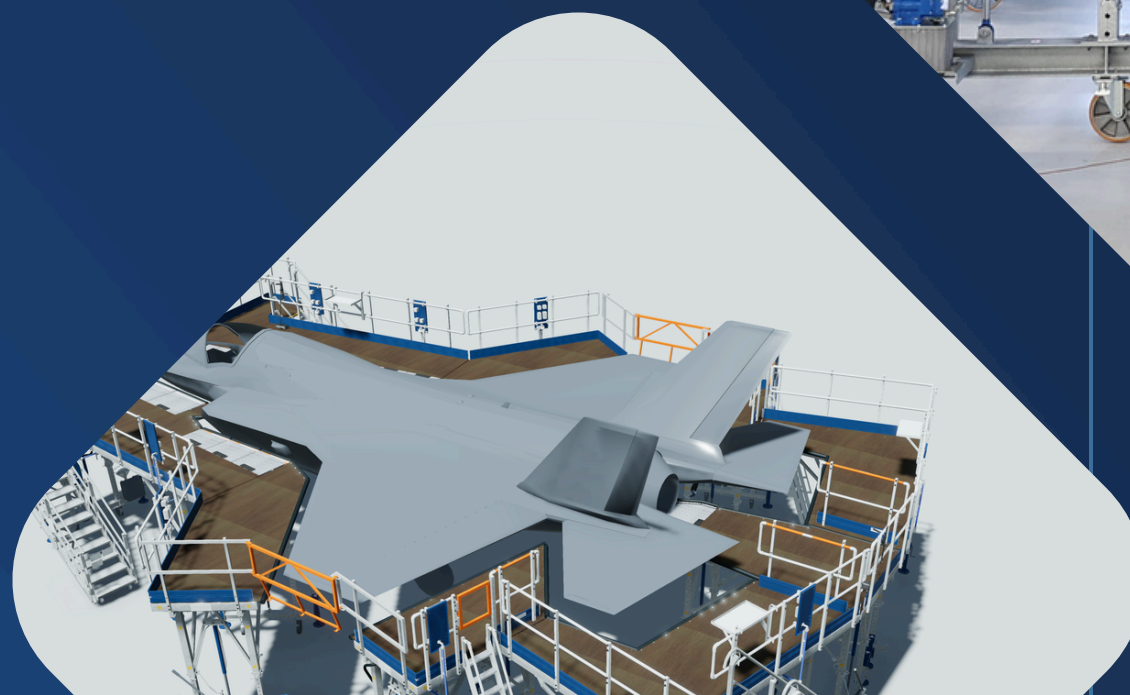




**nijl<sup>®</sup>**

## F35 Access Solutions

[www.nijlgroup.com](http://www.nijlgroup.com)







**nijl®**

For a safe working  
environment

# CONTENTS

- 3 Introduction
- 4 Wrap Around Platform
- 6 Light Maintenance Platforms
- 7 F135 Engine Stands



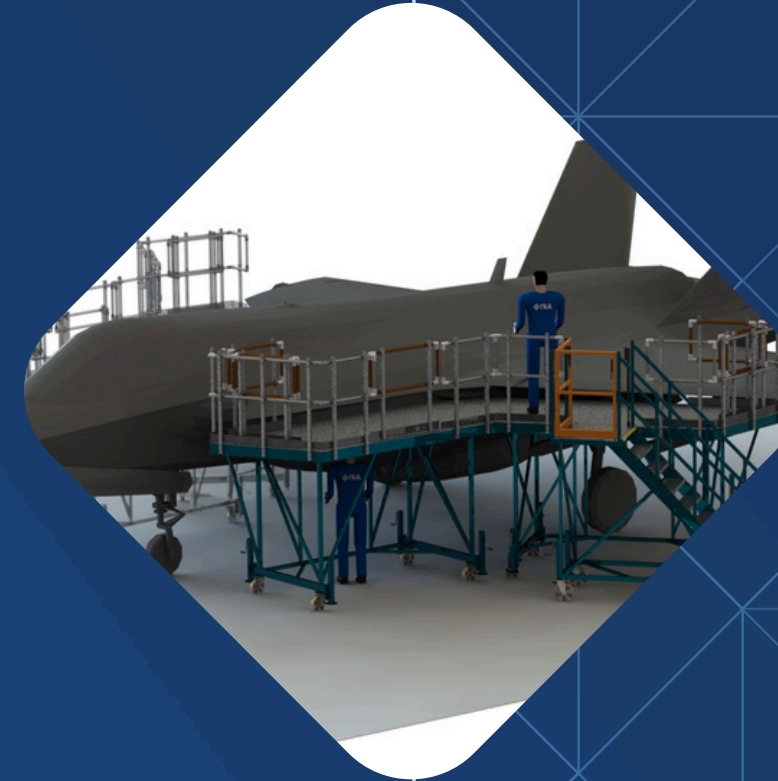
# — F35 ACCESS SOLUTIONS



NIJL offers a comprehensive range of access solutions for F-35 maintenance, including:

- **Wrap-around platforms** for full aircraft access, enabling efficient maintenance.
- **Light maintenance platforms** with adjustable sliding floors, height flexibility, and a stable, lightweight design for various tasks.
- **F135 engine stands** that provide strong support and precise positioning.

Key benefits include FOD prevention, CE certification, and compliance with international safety standards like the EC-Machinery Directive and OSHA. The platforms also feature ground mobility, ease of maneuverability, and multiple configurations, ensuring adaptability and enhancing safety and efficiency in F-35 maintenance.



# — WRAP AROUND PLATFORM

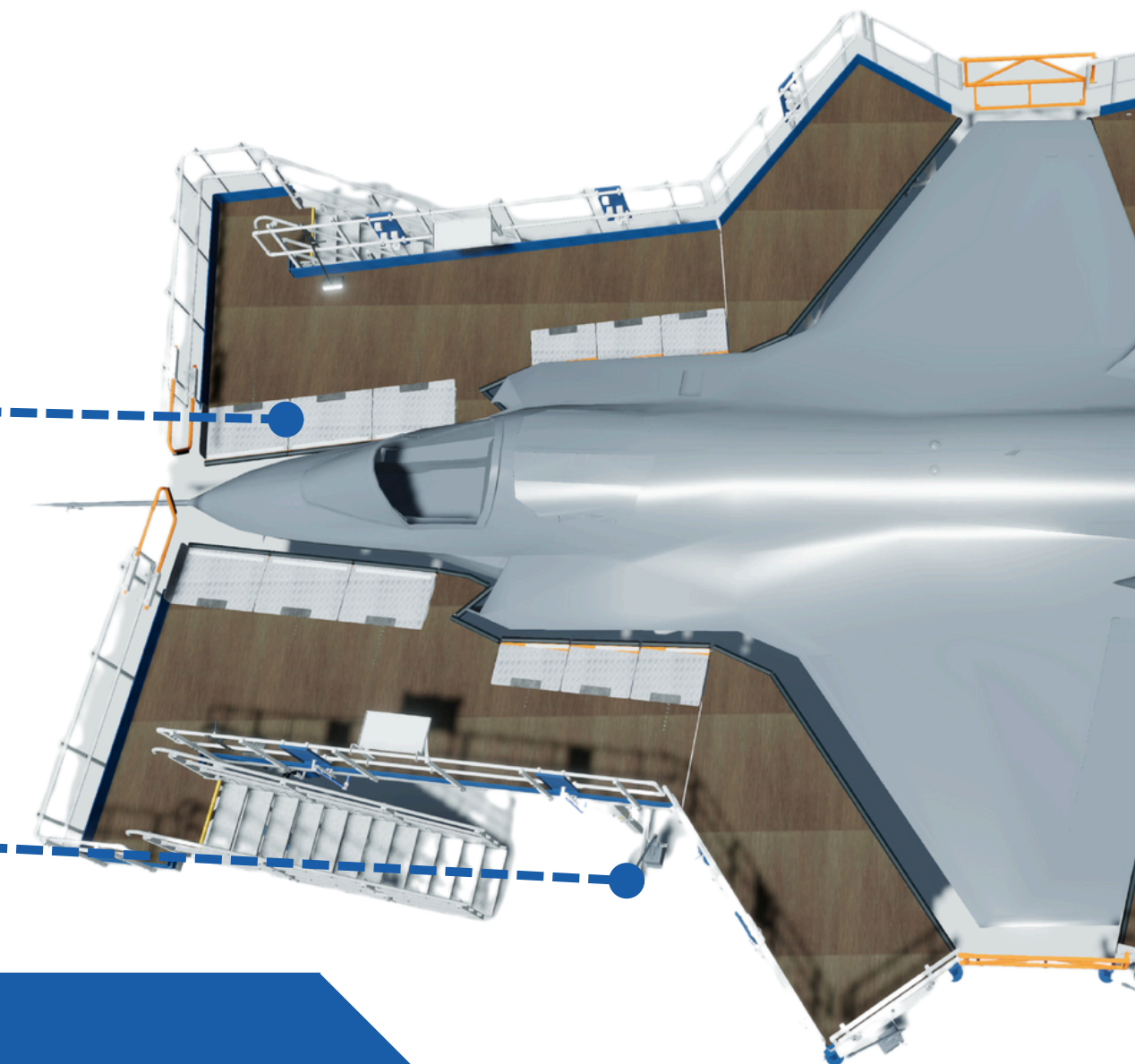
## KEY BENEFITS INCLUDE:

- **MANUALLY ADJUSTABLE SLIDING FLOORS**

for precise positioning enabling technicians to access the entire aircraft without additional equipment. This flexibility is crucial for efficient maintenance, reducing time spent on tasks.

- **HEIGHT ADJUSTMENT**

Another important feature is the adjustable platforms, which can be raised or lowered to accommodate different sections of the aircraft. This flexibility ensures maintenance personnel can work at the optimal height, whether performing on-wheels maintenance tasks or working on aircraft positioned on jacks, minimizing injury risks and enhancing productivity.



## APPLICABLE STANDARDS

NEN-EN-ISO 12100: 2010

NEN-EN 12312-8-2018

NEN-EN-ISO-14122: 2016

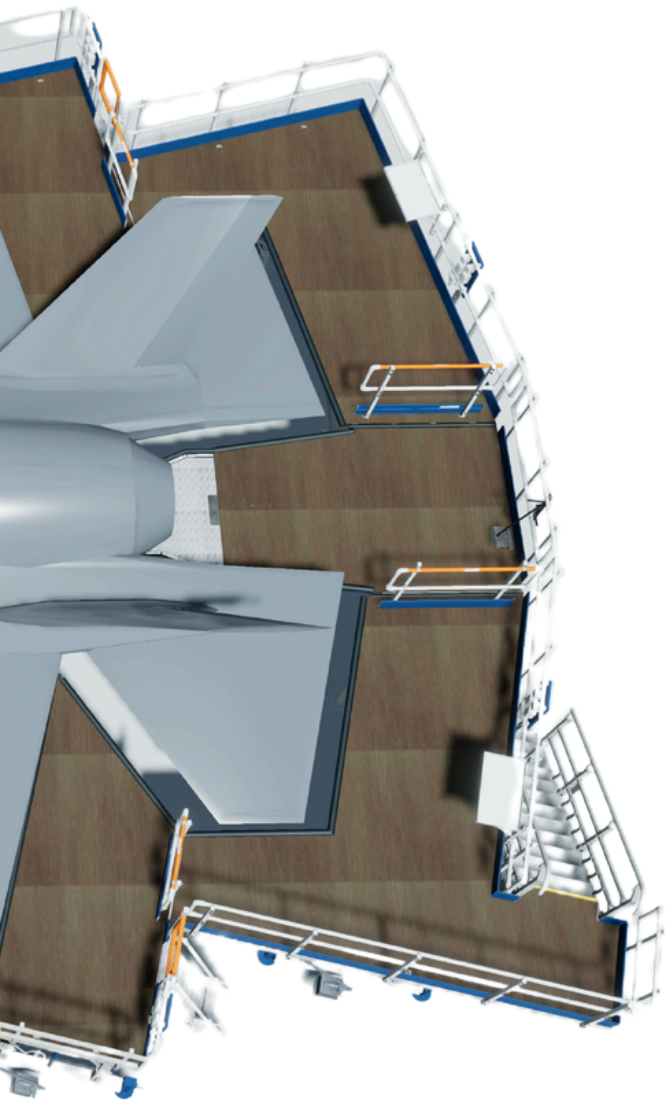
OSHA Standards



- Easy movement around the maintenance area
- Quick repositioning and storage
- Relocating platforms with ease
- Smooth maneuverability, even in tight spaces
- Enhanced agility minimizes downtime and boosts operational efficiency

---

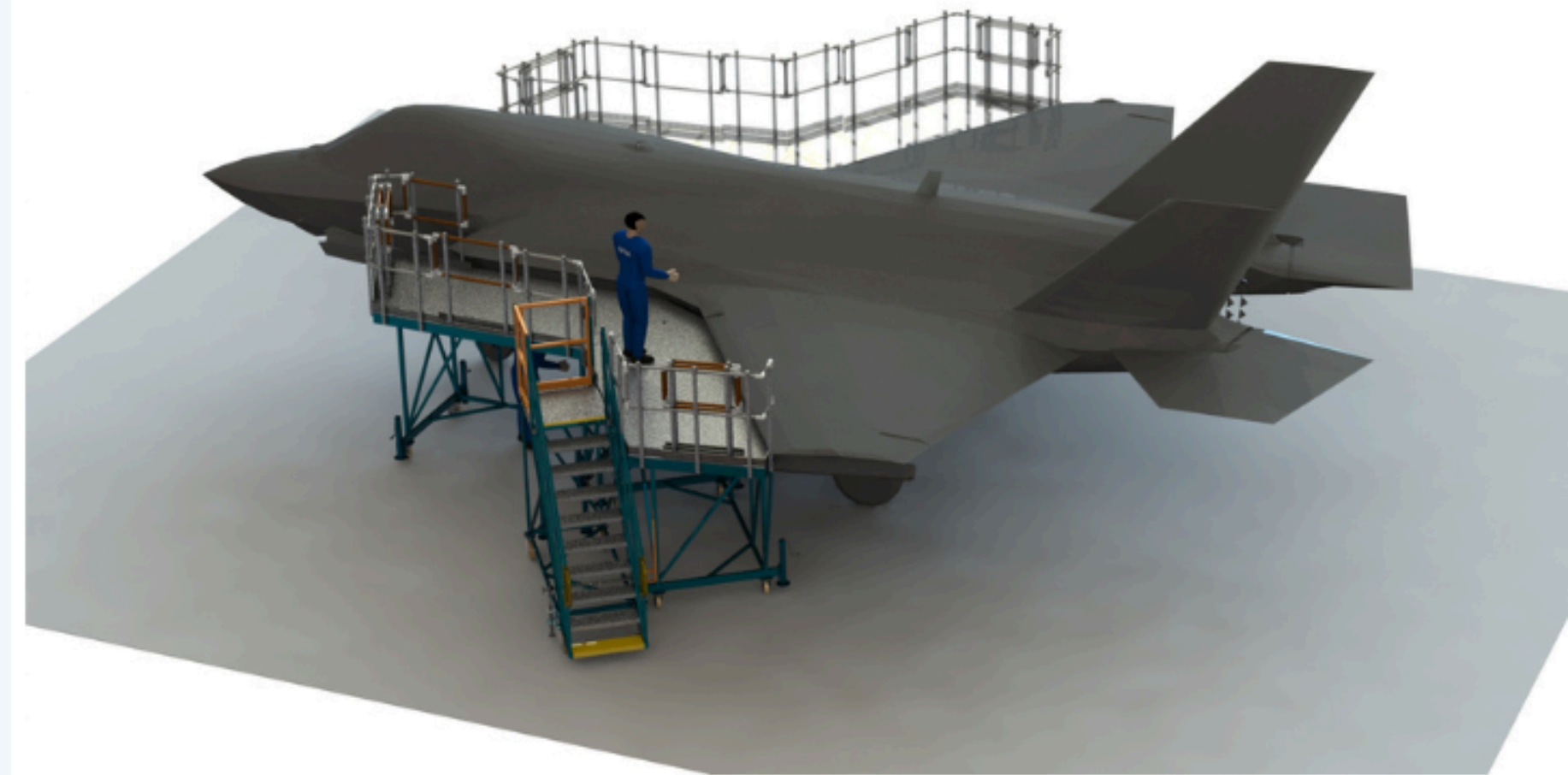
NIJL's access platforms are adaptable for various F-35 maintenance needs, offering cost-effective and flexible solutions. Key benefits include FOD prevention, safety assurance, OSHA and CE certification, ensuring compliance with EU health, safety, and environmental standards.





# LIGHT MAINTENANCE PLATFORMS

- **MODULAR DESIGN**  
enables positioning either side of the aircraft
- **CONFIGURABLE MAINTENANCE PLATFORM LAYOUT**  
offering full or partial coverage
- **MINIMIZED FOOTPRINT**  
by various access stair locations
- **STEEL & ALUMINIUM MATERIAL SELECTION**  
optimized for ease-of-mobility and rigidity
- **ALUMINUM RAILING ASSEMBLY**  
and anti-slip floor surface
- **FLEXIBLE RAILING CONFIGURATION**  
without compromising safety while working at height
- **OPEN STRUCTURE**  
for reaching aircraft maintenance areas underneath platforms
- **OPTIONAL UTILITIES**  
includes lighting, electrics and pneumatics

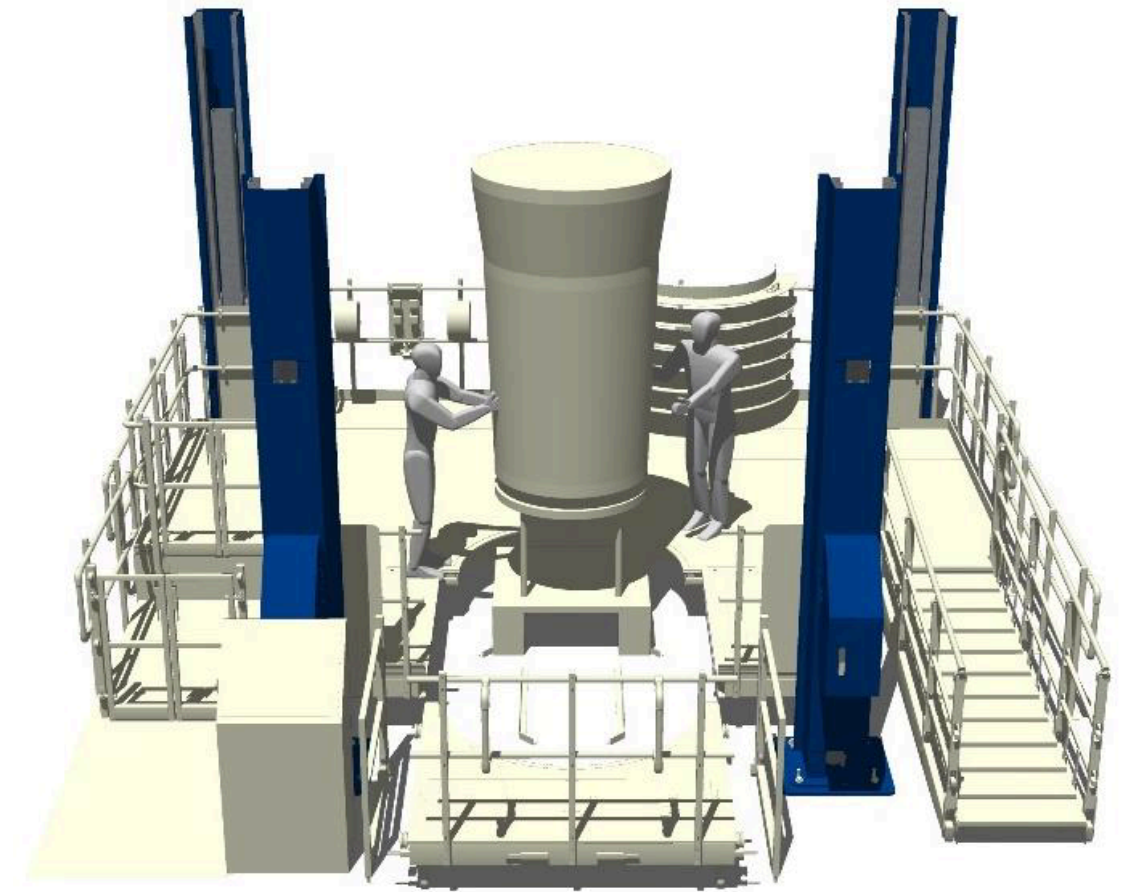




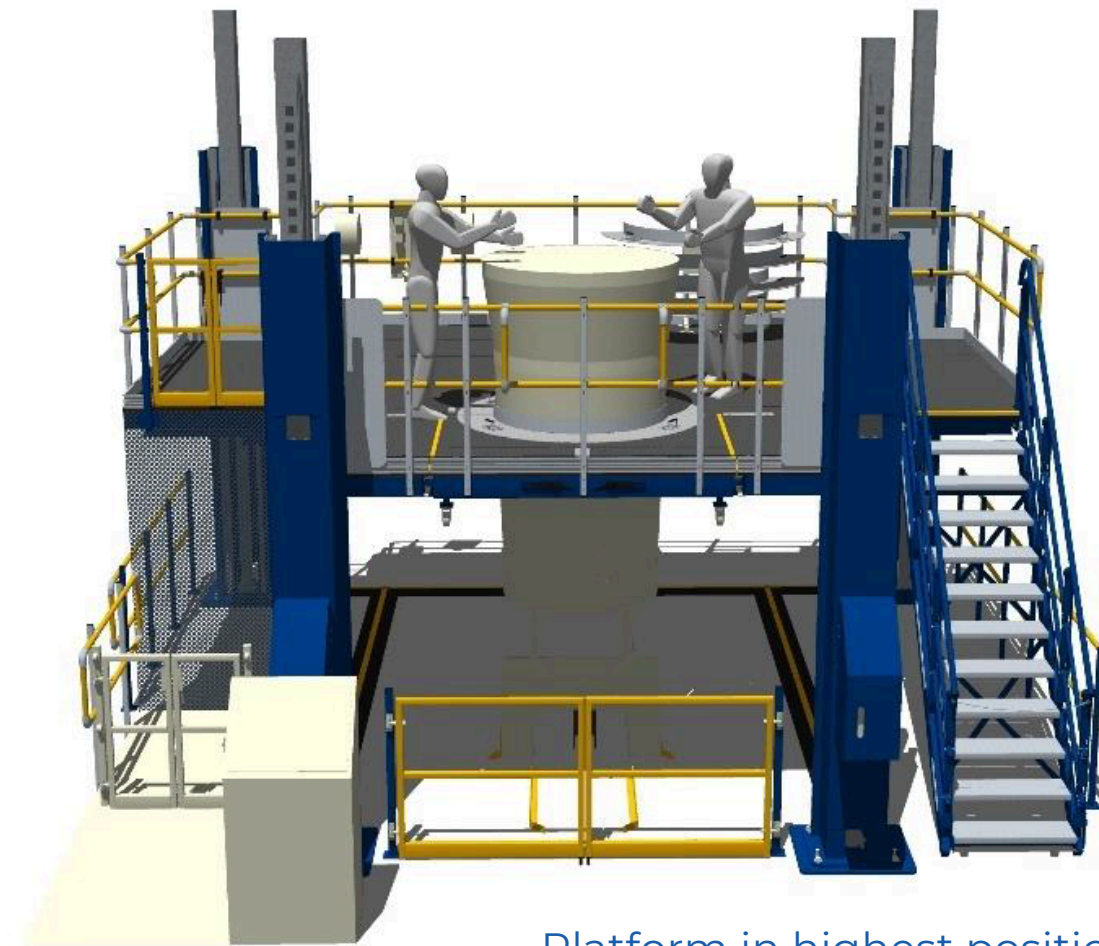
# F135 Engine Stand

Designed to eliminate the need and risk of lifting the engine allowing engineers to gain full access in a vertical position with height adjustment and adjustable floor system to eliminate any gaps.

- **HEIGHT ADJUSTABLE PLATFORM**  
eliminating the need to move the engine during maintenance
- **NO NEED FOR FLOOR PITS**  
Can be installed in any maintenance facility
- **AUTOMATED SAFETY**  
with positioning sensors and alarm system
- **FLOOR INSERTS**  
to close gap around the engine
- **INTEGRATED MATERIAL LIFT**  
(optional) to bring tools and components to the work area
- **OPTIONAL UTILITIES**  
such as electrical and pneumatic outlets



Platform in lowest position



Platform in highest position





**nijl**<sup>®</sup>

**For a safe working  
environment**

---

NIJL

Punterweg 4 8042PB

Zwolle

The Netherlands

NCAGE No.: H2BL2

T +31 38 202 80 20

E [info@nijlgroup.com](mailto:info@nijlgroup.com)

[www.nijlgroup.com](http://www.nijlgroup.com)